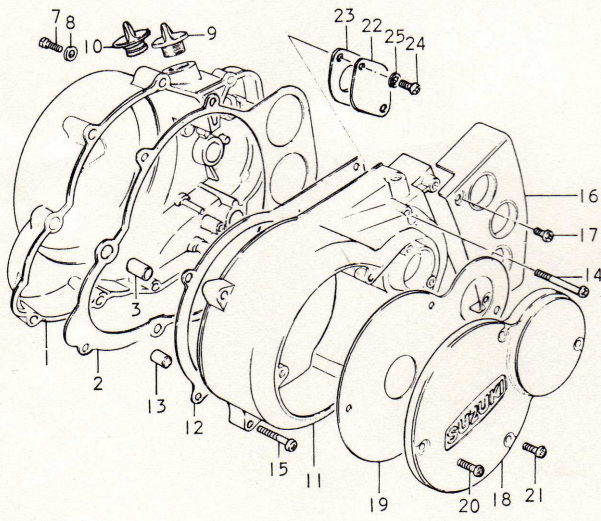
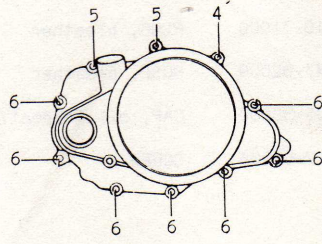


FIG.3 COVER



RL250

FIG.3 COVER

Ref.No.	Part No.	Description	Q'ty		Remarks
			L	M	
1-1	11341-30000	COVER, clutch	1	-	to 11341-30001
1-2	11341-30001	COVER, clutch	1	-	to 11341-30002 Used with 09259-19002
1-3	11341-30002	COVER, clutch	1	1	
2-1	11482-30000	GASKET, clutch cover	1	-	OD:156 to 11482-30000
2-2	11482-30001	GASKET, clutch cover	1	1	
3	09206-13001	DOWEL PIN	2	2	
4	02112-06458	SCREW	1	1	
5	02112-06358	SCREW	2	2	
6	02112-06258	SCREW	7	7	
7	09128-06004	PLUG, oil level	1	1	
8	09168-06001	GASKET	1	1	
9	09259-20003	PLUG, oil filler	1	-	Used to 11341-30001 & 11341-30002
10	09259-19002	PLUG, oil filler	1	1	
11	11351-38000	COVER, magneto	1	1	
12	11483-30000	GASKET, magneto cover	1	1	
13	04211-09129	DOWEL PIN	1	1	
14	02112-06508	SCREW	2	2	
15	02112-06258	SCREW	2	2	
16	11361-30300	COVER, engine sprocket	1	1	
17	02112-05107	SCREW	2	2	

RL250

FIG.3 COVER

Ref.No.	Part No.	Description	Q'ty		Remarks
			L	M	
18	11381-30001	CAP, magneto inspection	1	1	
19	11491-30000	GASKET, magneto inspection cap	1	1	
20	02111-05207	SCREW	1	-	
21	02112-05168	SCREW	3	4	
22	16745-16700	CAP	1	1	
23	16731-03100	GASKET, cap	-	1	
24	02111-05127	SCREW	2	2	
25	08321-21058	LOCK WASHER	-	2	

RL250