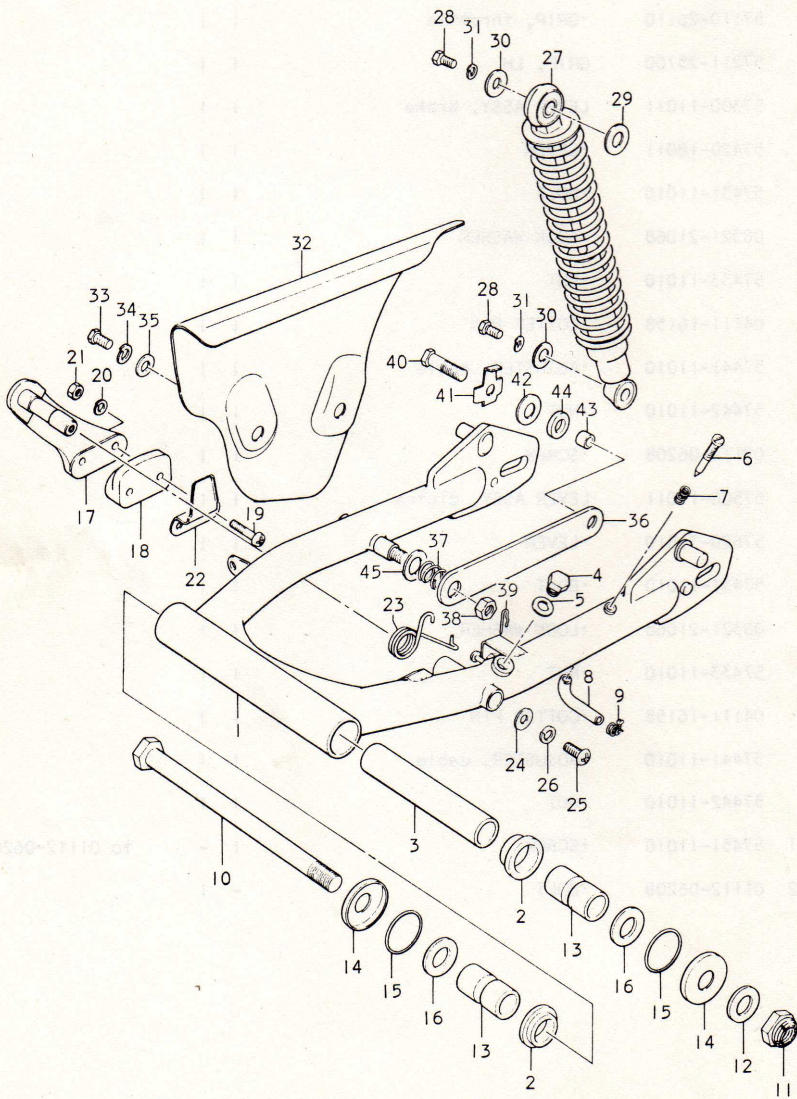


FIG.19 REAR SWINGING ARM



RL250

FIG.19 REAR SWINGING ARM

Ref.No.	Part No.	Description	Q'ty		Remarks
			L	M	
1	61100-38812-126	REAR SWINGING ARM SET	1	1	
2	09307-22002	·BUSHING	2	2	
3	61280-32000	·SPACER	1	1	
4	09247-14008	·PLUG	1	1	
5	09168-14001	·GASKET	1	1	
6	61274-38000	·SCREW, oil outlet	1	1	
7	09440-08006	·SPRING	1	1	
8	09343-06008	·HOSE	1	1	
9	09401-10402	·CLIP	1	1	
10	61211-38000	SHAFT, rear swinging arm	1	1	
11-1	09159-14002	NUT	1	-	to 09159-14003
11-2	09159-14003	NUT	-	1	
12	08322-11148	WASHER	1	1	
13	61251-15000	SPACER, rear swinging arm	2	2	
14	61262-15000	COVER, dust seal	2	2	
15	09280-30001	DUST SEAL	2	2	ID:24.5, d:3
16	09160-14009	THRUST WASHER	2	2	12.5x24x2.3
17	61340-38002	TENSIONER, chain	1	1	
18	61350-38000	RUBBER, chain tensioner	1	1	
19	09125-05109	SCREW	2	2	
20	08321-21058	LOCK WASHER	2	2	
21	08311-11058	NUT	2	2	
22	61351-38001	PLATE	1	1	
23	09448-24001	SPRING	1	1	
24	09160-06019	WASHER	1	1	

RL250

FIG.19 REAR SWINGING ARM

Ref.No.	Part No.	Description	Q'ty		Remarks
			L	M	
25	02141-06127	SCREW	1	1	
26	08321-21068	LOCK WASHER	1	1	
27	62100-38010	SHOCK ABSORBER ASSY, rear	2	2	
28	01112-06128	BOLT	4	4	
29-1	09164-12007	WASHER	2	-	
29-2	09160-12006	WASHER	-	2	
30	09160-06004	WASHER	4	4	10.5x24x2.3
31	08321-21068	LOCK WASHER	4	4	
32-1	61310-38000-126	CHAIN CASE	1	-	Material:Aluminium to 61310-38001-126
32-2	61310-38001-126	CHAIN CASE	-	1	Material:Steel
33	01122-08168	BOLT	2	2	
34	08321-21088	LOCK WASHER	2	2	
35	08322-11088	WASHER	1	1	
36	64311-38000	LINK, rear torque	1	1	
37	09440-18002	SPRING	1	1	
38	08311-11108	NUT	1	1	
39	09385-10001	CLIP	1	1	
40	09119-10012	BOLT	1	1	
41	09167-10004	WASHER	1	1	
42	09160-10028	WASHER	1	1	
43	09180-10026	SPACER	1	1	
44	09161-14006	CUSHION	1	1	
45	08322-11148	WASHER	1	1	

RL250